

MARCH 2023

LIVING FUTURE ACCREDITATION EVERYTHING YOU NEED TO KNOW

A COMPLETE GUIDE TO LFA
FROM START TO FINISH

WHAT IS LFA?

Living Future Accreditation (LFA) is the professional credential that recognizes and rewards proficiency in the most ambitious, advanced, and holistic regenerative design standards available.

TABLE OF CONTENTS

(click to jump to page)

| | |
|----------------------------|-----|
| BENEFITS | 2 |
| PROCESS | 3-4 |
| FEES & DISCOUNTS | 5 |
| LFA FAST TRACK | 6 |
| LFA WITH YOUR TEAM | 7 |
| COMMON QUESTIONS & ANSWERS | 8-9 |

WHO SHOULD PURSUE LFA?

Practitioners and advocates of regenerative design

- Architecture
- Engineering
- Real estate development
- Community and campus planning
- Manufacturing
- Product design
- Product sales
- Interior design
- Construction
- Landscape design
- Ecology & environmental science

Change makers in deep green building, manufacturing, and design as well as community and corporate social justice and equity

- Government and policy leaders
- Sustainability leaders
- Team and community leaders
- Philanthropists

Educators of regenerative architecture and related fields in sustainability and resiliency

Emerging professionals and students seeking credentials to advance their careers

LFA

EVERYTHING YOU NEED TO KNOW

BENEFITS

Depth and diversification of advanced sustainable design knowledge

- Familiarity with ILFI's certification programs, labels, and initiatives
- Understanding of leading edge regenerative design philosophy
- Flexibility to specialize in topic area(s) of interest

Workplace recognition

- Personal use of post-nominal initials (LFA) and official LFA seal
- Distinguishment as a leader in your industry

Project and career opportunities for impact

- Eligibility to fulfill the LFA project team member requirement on LBC 4.0 and Core Green Building projects
- Preparation and confidence for working on projects pursuing Living Future Challenge certifications and labels
- Growth in your capacity to work on and advocate for advanced sustainable design projects

Global community of LFA peers

- Belonging to an international and diverse community of practice that shares a common vision for a Living Future
- Connection with fellow LFA professionals through opportunities provided by ILFI

Advance the regenerative buildings movement by applying your LFA knowledge and leading the way

BECOME A LIVING FUTURE MEMBER

Join a global community of advocates and make valuable connections. Members receive 10% off all online courses, certificates, and LFA—and exclusive access to members-only continuing education and networking opportunities. Members also receive discounts on other ILFI education such as Ecotone books and Living Future Conference tickets.

[Explore membership](#)

ATTEND THE LIVING FUTURE CONFERENCE

Participate in our annual, global gathering of stakeholders from the built environment who are addressing climate, health, and justice issues. Connect with other LFA professionals and apply to be a speaker.

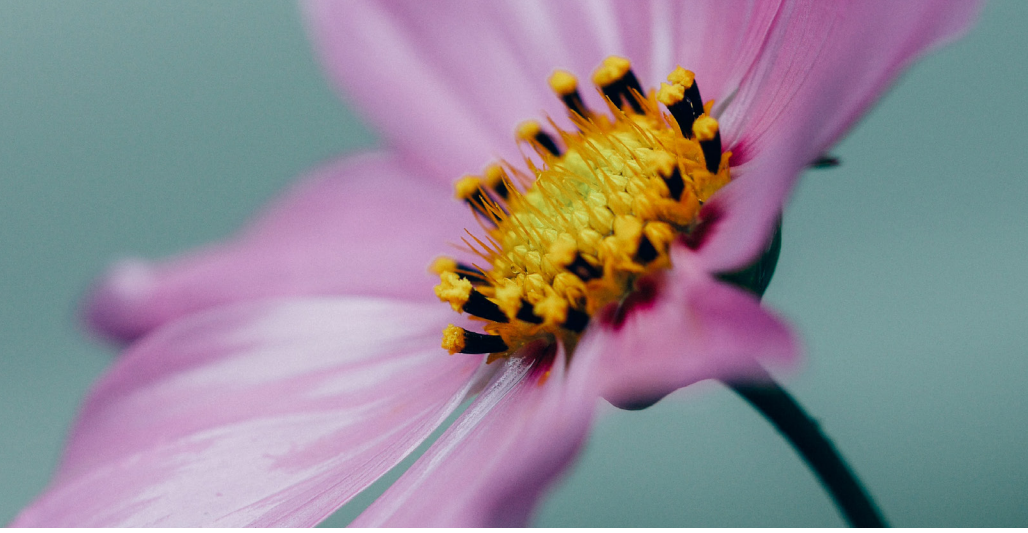
[Register for the conference](#)

TAKE ACTION WITH YOUR LFA

Integrate regenerative design into your work and make the jump to LBC and other Living Future Challenges. From exploring feasibility all the way through the certification audit or label publication, leverage your LFA to advocate for transformational change and dare to challenge the norm.

[Learn more about ILFI programs](#)

LFA PROCESS



LFA REQUIREMENTS

Unlike other accreditations, LFA does not require a final exam. Instead, the credentialing process is based on modularized learning achievements that advance your knowledge of regenerative design topics. You'll complete your Foundational education in an easy to manage, self-paced online format—the courses are broken down into chapters of video and textual content, with interactive knowledge checks and multiple-choice quizzes throughout the lessons. Flexibility in General education allows you to explore a variety of formats and topics.

STEP 1: ENROLL IN THE LFA FOUNDATIONAL CURRICULUM

Upon enrollment, you will gain immediate access to your first courses. Living Future Members receive 10% off the LFA Foundational Curriculum and all other ILFI education. During enrollment, you'll create (or update) your Living Future Education account.

[Begin enrollment](#)

STEP 2: LEARN! COMPLETE EDUCATION WITHIN ONE YEAR OF ENROLLMENT

LFA achievement requires the completion of the LFA Foundational Curriculum and 16 General credits within a one year period. Education completed up to one year prior to your enrollment date may be self-reported towards this requirement.

COMPLETE THE LFA FOUNDATIONAL CURRICULUM

All learners complete the LFA Foundational Curriculum to become accredited. It is provided as one curriculum to streamline the experience for proceeding through courses.

The Foundational courses give you a working knowledge of ILFI certification programs, labels, and initiatives (alongside regenerative design topics) and are updated periodically to identify the best course offerings for the credential. You may complete the on-demand courses online at your own pace, whenever you want, wherever you are! An optional mobile-friendly format optimizes the course activities for smaller screens.

[Preview the Foundational courses](#)

EARN 16 LFA GENERAL CREDITS

General education allows you to specialize in the topic areas of your choosing. This education may be earned from a variety of sources, including but not limited to:

- Any [Living Future Education online courses](#) not contained in the LFA Foundational Curriculum
- [Webinars and other events](#), delivered by ILFI or other providers
- Reading Ecotone books (published by ILFI) and participating in the members-only [Ecotone Book Club](#) online discussion forum
- Participating in the annual [Living Future Conference](#)
- Living Future project team work experience, including serving as an official auditor or as a designated LFA professional on LBC, LCC, or LPC projects or Declare, Just, or Reveal labels
- [Other relevant education](#) may be submitted and will be reviewed at time of final audit

If you already hold an active green building credential, such as LEED AP, may be eligible to [Fast Track](#) their completion of the 16 LFA General credits requirement (details in next section).

LFA PROCESS

SELF-REPORT LFA CREDITS AND TRACK PROGRESS TOWARDS LFA

LFA credits earned via Living Future Education online courses will be automatically recorded; there is no need to report these credits individually.

Credits earned from other sources (whether ILFI or not) must be self-reported through Living Future Education to appear on your transcript.

Once logged in, view your transcript to see the total credits recorded and reported towards your LFA. At any time, you may also choose to opt in for automatic, regularly-scheduled progress update emails.

Are you ready to self-report LFA General credits or access the Fast Track? Log in to education.living-future.org and record the details on your transcript.

Self-report credits

STEP 3: ACHIEVE LFA, APPLY YOUR KNOWLEDGE, AND STAY CONNECTED

After you have completed the education, you'll conduct a self-audit to automatically add your LFA to the queue for ILFI verification. Upon successful review, you will receive a certificate of achievement you can share with your networks.

Stay up to date with the latest regenerative design education and connected with the ILFI community as a Living Future Member. Members receive exclusive access to free CEU webinars, invites to special networking opportunities, and more.

As an LFA professional, take action to make an impact with your knowledge and expertise by bringing forth

LFA ACHIEVEMENT CHECKLIST

☐ LFA education

INCLUDING:

☐ LFA Foundational Curriculum

☐ 16 General credits

☐ Completed within a year of enrollment

☐ Recorded and reported in Living Future Education transcript

☐ Final self-audit

advanced solutions for reinventing our relationship with the natural world, the built environment, and each other.

Celebrate! Boost your profile and expand your network

- Share your accomplishment with your colleagues, partners, and clients
- Add 'LFA' to your email signature, LinkedIn page, etc.
- Introduce yourself and start making connections in the [Living Future Member discussion board](#)

Take action towards a Living Future for all

- Volunteer with our [Technical Advisory Groups \(TAGs\)](#)
- Apply to speak at the next [Living Future Conference](#)
- Start introducing your colleagues and clients to the Living Future certification programs and labels
- Work as a designated LFA professional or an official auditor on a Living Future project pursuing certification or publication of a transparency label

LFA FEES & DISCOUNTS

COST

Living Future Members save 10% on all ILFI education. Depending on your individual preferences and prior education, costs to achieve LFA will vary. The chart beside illustrates a framework for your total investment.

To develop a personal estimate, it may help to consider how you'll complete each of the 16 General credits. Any relevant education from the year before or during your enrollment may contribute.

WAYS TO SAVE

A discount on LFA Foundational Curriculum enrollment is available for Living Future Members. A larger discount is available for teams via Corporate Membership Packages that also include other benefits.

A savings on General credits is available for aspiring LFA professionals who also maintain another green building credential—choose the Fast Track option to fulfill this requirement at no additional cost.



LFA FOUNDATIONAL CURRICULUM

\$750 USD (non-member)

\$675 USD (member)

Team discounts available in Living Future Corporate Membership packages.

OPTIONS FOR 16 LFA GENERAL CREDITS

Fast Track (16 credits)

\$0 additional cost

Living Future Education online courses (1 credit each)

Average \$49 USD non-member, \$44.10 USD member

Foundations of Biophilic Design Certificate (9 credits)

\$295 USD non-member, \$265.50 USD member

Living Future Conference (over 16 credits available)

From \$1,300 USD non-member, \$1,170 USD member

Members-only CEU webinars (1 credit each)

\$0 (included with membership)

Members-only Ecotone Book Club (3 credits per book)

\$5-\$50 USD non-member, \$4.50-\$45 USD member

ILFI project team work experience

\$0 additional cost

Costs vary for other education

LFA FEES & DISCOUNTS

LFA FAST TRACK OPTION

Already a LEED AP, or hold another green building credential? Get on the LFA Fast Track.

You're not starting from square one, so let's build on your existing knowledge to go further, faster! Save time and money by applying another active green building credential towards your LFA, to fulfill the requirement of 16 General credits.

Common green building credentials that qualify include, but are not limited to:

- BREEAM
- LEED (*excluding Legacy*)
- EcoDistricts
- PHI/PHIUS
- Green Star (Int'l GBC)
- WELL

Feel free to inquire about eligibility of another green building credential if it does not appear on this list. Eligibility is determined by whether the credential requires a minimum of 16 hours of green building continuing education within two years.

Are you ready to Fast Track your LFA? Any time after enrollment, log in to education.living-future.org and upload evidence of your other active credential to your transcript.

Log in & submit other green building credential



LFA FEES & DISCOUNTS

DISCOUNTS

There are two ways you can save on the cost of LFA:

1. Become a Living Future Member
2. Pursue LFA with your team through Living Future Corporate Membership packages

DISCOUNTS FOR LIVING FUTURE MEMBERS

Members receive 10% off all online courses, certificates, and LFA—and exclusive access to members-only continuing education and networking opportunities. Members also receive discounts on other ILFI education such as Ecotone books and Living Future Conference tickets.

[Become a member](#)

DISCOUNTS FOR TEAMS PURSUING LFA

Grows your team's recognition as leaders in regenerative design, and join the community of organizations building their capacity to advocate for a Living Future.

Corporate Membership packages offer discounts on education and are a streamlined way to provide everything your team needs to become accredited.

These packages can include LFA Foundational Curriculum enrollments and General credit online courses, so the entirety of the LFA costs are covered.

Note: Non-profit and public organizations receive an additional 40% fee reduction on these packages.

Benefits for your team include:

- Exclusive access to peer-to-peer and expert-led education experiences, company promotion, and networking opportunities
- Reduced overall cost of accreditation
- Growth of your organization's capacity to work on and

- advocate for advanced sustainable design projects
- Confidence responding to and leading projects pursuing Living Future Challenge certifications and labels
- Having a breadth and depth of regenerative design knowledge on the team

[Explore group packages](#)

Listed below are just some of the over 70 organizations who have already pursued LFA together:

- Arup
- Calico Studio
- DLR Group
- GGLO
- Grimshaw Architects
- Group14 Engineering
- HDR, Inc.
- Integral Group
- LATITUDE | Regenerative Real Estate
- M Moser Architects
- Overland Partners Architects
- Red Studio Inc Architects
- Steinberg Hart Architects
- Turner Construction Company

HOW TO ACHIEVE LFA WITH A TEAM

1. Determine your group size and review our packages.
2. Email LFA@living-future.org to establish the group, discuss package customization, and pay via invoice.
3. Receive access to your package benefits and distribute them amongst your team.
4. Each learner in the group achieves LFA as an individual.



LFA

COMMON QUESTIONS & ANSWERS

TOP 5 FREQUENTLY ASKED QUESTIONS

1. HOW LONG DOES IT TAKE TO ACHIEVE LFA, AND IS THERE A FINAL EXAM?

There is no final exam for LFA. Competencies are assessed with course-level knowledge checks and quizzes throughout the Foundational Curriculum, and you can take as many attempts as needed to pass each one.

This method takes the pressure off, and it allows you to identify what material you found challenging so you can truly focus on deepening your understanding. After you have completed your LFA education and requirements, you will conduct a self-audit of your progress and submit your LFA to ILFI for final verification.

We offer a full year to progress from LFA enrollment to achievement. You are welcome to pace your LFA journey according to your own timeline. Over half of enrolled learners complete their LFA in under 3 months. Some learners choose to utilize the full year to segment their focus (e.g. by completing one course per week, or one topic per month).

- The Foundational Curriculum courses will take you an estimated 20-30 hours to complete. This estimate varies based on your familiarity with the topics and how much time you spend exploring the websites and reading the resources provided.
- Additionally, you can budget around 16 hours to complete the 16 LFA General credits. For non-ILFI education sources, we consider 1 contact hour of education as equivalent to 1 LFA credit. Or, with the [LFA Fast Track option](#), fulfilling this requirement could take only a couple of minutes! (You'll simply need to upload your active other green building credential certificate to your Living Future Education transcript.)

2. WHAT ARE SOME EXAMPLES OF HOW TO EARN LFA GENERAL CREDITS?

Check out the options listed under the 'Earn 16 LFA General Credits' section [above](#). In addition to Living Future Education online courses, ILFI provides several other types of education opportunities (see below for a few examples). ILFI also accepts relevant education delivered by other providers.

Example 1: Complete a variety of Living Future Education online courses and certificates based on your own interests and goals, at your own pace

- Save 10% on all online education enrollments as a Living Future Member! Completing the first-of-its-kind 12-hour biophilic design certificate, for example, offers 9 General credits AND an additional accomplishment to display. Browse all General credit courses [here](#). (Credits will be automatically recorded on your transcript upon course completion.)

Example 2: Participate in the [Living Future Conference](#) and connect with thought leaders around the world

- Members save 10% on tickets! Attend sessions of your choosing (CEUs will be listed in each session description). Then, complete the self-reporting activities to record the credits in your Living Future Education account [here](#).

Example 3: Read [Ecotone books](#) to explore beautiful case studies and technical guidance

- Credit is available exclusively for Living Future Members, who also save 10% on all titles! Read the book(s) of your choice. Then, complete the self-reporting activities to record the credits in your Living Future Education account [here](#).

LFA

COMMON QUESTIONS & ANSWERS

Example 4: Work on a [Just Label](#), a [Living Building](#), etc. as a member of the project team (or as an auditor)

- Contribute to the publication of a label or the design, construction, manufacturing, or certification of a project. Then, complete the self-reporting activities to record the credits in your Living Future Education account [here](#).

You're welcome to mix and match your education sources to reach the total 16 LFA General credits—read an Ecotone book, complete a couple of our online courses, and attend our next conference for a diversity of learning opportunities and formats.

3. HOW CAN I TRACK MY PROGRESS TOWARDS ACHIEVING LFA?

Within your [Living Future Education](#) account, view your transcript to see the total credits recorded and reported towards your LFA.

LFA credits earned via Living Future Education online courses will be automatically recorded; there is no need to report these credits individually.

Credits earned from other education (whether provided by ILFI or not) must be reported through Living Future

Education to appear on your transcript. Active holders of another green building credential (see [Fast Track](#) option) must submit proof through Living Future Education.

4. CAN LFA CREDITS EARNED BEFORE ENROLLMENT CONTRIBUTE TO MY LFA?

LFA credits earned up to a year prior to your enrollment may be applied towards your LFA. Have you already completed some General credits, e.g. by attending our annual Living Future Conference? These credits can be applied to your LFA and will simply need to be self-reported in your Living Future Education account after you've enrolled in LFA.

5. WHAT CAN I DO AFTER ACHIEVING LFA?

Take action to make an impact with your knowledge and expertise, and stay connected with the ILFI community.

Celebrate! Boost your profile and expand your network

- Share your accomplishment with your colleagues, partners, and clients
- Add 'LFA' to your email signature, LinkedIn page, etc.
- Introduce yourself and start making connections in the [Living Future Member discussion board](#)

Stay up to date with regenerative design education

- Enroll in the first-of-its-kind 12-hour [Foundations of Biophilic Design Certificate](#) and other new courses
- Members receive ILFI education discounts and exclusive access to free, members-only CEU webinars

Take action towards a Living Future for all

- Volunteer with our [Technical Advisory Groups \(TAGs\)](#)
- Apply to speak at the next [Living Future Conference](#)
- Start introducing your colleagues and clients to the Living Future certification programs and labels
- Work as a designated LFA professional on a Living Future project pursuing certification

Have further questions? Check out the full FAQs [here](#) or write to us at LFA@living-future.org for additional clarity and support.

